

# VENUS OVER MANHATTAN

Press Release

## ART BASEL MIAMI BEACH

December 4 - 8, 2024

Stand M17

### Miami Beach Convention Center

1901 Convention Center Drive

Miami Beach, FL 33139



(Miami, FL) – **Venus Over Manhattan** is pleased to return to **Art Basel Miami Beach** with a dynamic selection of historic and contemporary works. Reflecting the gallery's evolving program, our presentation at **Booth A4** will feature new works by artists new to the gallery program, including Brad Kahlhamer, Neil Jenney, Seth Becker, John Pule, Elizabeth Colomba, Phoebe Derlee, and Yuichiro Ukai. Complementing these new works are both recent and historic pieces by Xenobia Bailey, Anastasia Bay, Ana Benaroya, Joan Brown, Helen Frankenthaler, Sally Gabori, Susumu Kamijo, Claude Lawrence, Roy Lichtenstein, Richard Mayhew, Jim Nutt, Joyce Pensato, Richard Prince, Peter Saul, Keiichi Tanaami, and Takako Yamaguchi.

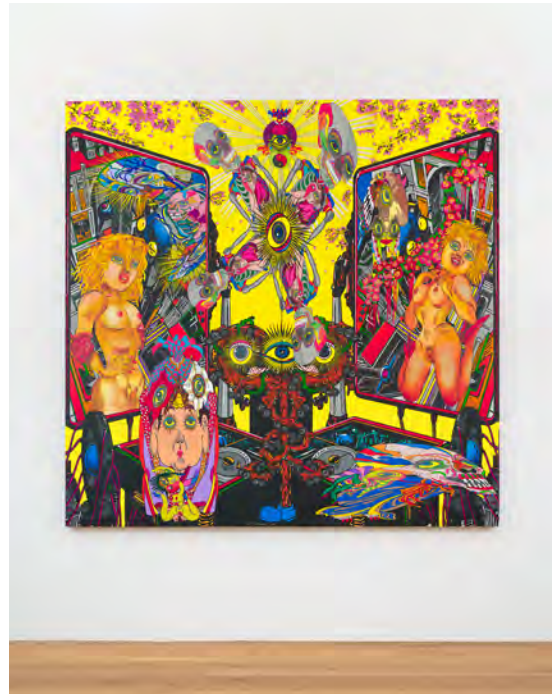
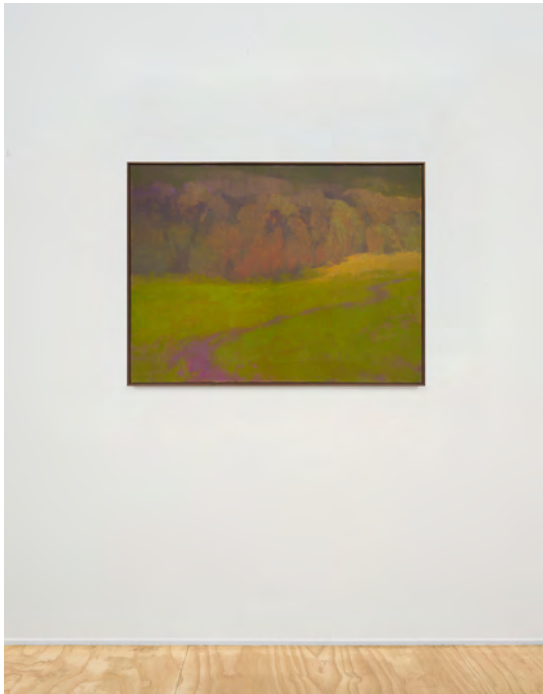
39 GREAT JONES ST  
NEW YORK, NY 10012

55 GREAT JONES ST  
NEW YORK, NY 10012

T +1 (212) 980-0700  
F +1 (212) 980-8861

WWW.VENUSOVERMANHATTAN.COM  
INFO@VENUSOVERMANHATTAN.COM

## VENUS OVER MANHATTAN



### BOOTH HIGHLIGHTS

This year's booth pays tribute to two pivotal figures in the gallery's program, **Richard Mayhew** and **Keiichi Tanaami**, both of whom passed away earlier this year. Richard Mayhew's legacy is celebrated with a concurrent presentation of his watercolors titled "Richard Mayhew: Watercolor," on view through December 21 at Venus Over Manhattan's New York gallery.

Keiichi Tanaami's legacy is further honored with the opening of his first-ever solo museum exhibition in the United States, "**Keiichi Tanaami: Memory Collage**," at ICA Miami on November 21, underscoring his indelible impact on contemporary art. A signature work by Tanaami, *Pleasure Machine* (2017) exemplifies his seamless merging of pop iconography with traditional Japanese art forms.

A major highlight of the booth is Helen Frankenthaler's painting *Flume* (1977), a rarely seen work previously held in the collection of Clement Greenberg, the legendary art critic and advocate for Abstract Expressionism. Complementing this is Roy Lichtenstein's *Paintings: Picasso Head* (1984), which reimagines a Picasso drawing through the artist's iconic Ben-Day dot technique.

Also featured is Brad Kahlhamer's *Rapid City Chants/Super Cascade* (2024), a monumental dreamcatcher sculpture constructed from wire and bells. This work is part of Kahlhamer's larger *Super Catcher* series. Kahlhamer's work is currently on view at the Brooklyn Museum and is held in the permanent collections of SFMOMA, the Walker Art Center, and the Joslyn Art Museum.

## VENUS OVER MANHATTAN



Other contemporary works include *Orientalism – Plate 2* (2024), a new piece by Elizabeth Colomba, whose solo exhibition with Venus Over Manhattan will open next year; *Baby Trump* (2024), a brand-new painting by Peter Saul; and *North America Depicted* (2024), a signature painting by Neil Jenney following his recent two-person show with Venus titled *American Realism Today*.

### FEATURED ARTISTS

Artists featured in the presentation include: Xenobia Bailey, Anastasia Bay, Seth Becker, Ana Benaroya, Katherine Bernhardt, Joan Brown, Elizabeth Colomba, Phoebe Derlee, Helen Frankenthaler, Sally Gabori, Neil Jenney, Brad Kahlhamer, Susumu Kamijo, Claude Lawrence, Roy Lichtenstein, Richard Mayhew, Jim Nutt, Joyce Pensato, Richard Prince, John Pule, Peter Saul, Keiichi Tanaami, Yuichiro Ukai, and Takako Yamaguchi.

### ABOUT VENUS OVER MANHATTAN

Venus Over Manhattan is dedicated to illuminating the work of a diverse range of historical and contemporary artists through dynamic rotating exhibitions and scholarly publications. Since it was founded by Adam Lindemann in 2012, the gallery has been responsible for revitalizing and establishing commercial, scholarly, and public interest for artists such as Peter Saul, Richard Mayhew, and Joan Brown. Venus Over Manhattan operates from two locations on Great Jones Street and its distinct exhibitions program, which has recently featured works by Claude Lawrence, Peter Saul, Richard Mayhew, Chéri Samba, Keiichi Tanaami, and Joan Brown, attracts a broad spectrum of collectors, curators, writers, and arts enthusiasts. As art world trends continue to shift, Venus Over Manhattan remains steadfast in its focus on the

## VENUS OVER MANHATTAN

discovery of artists across generations, geographies, and cultures and to expanding the depth of artists celebrated across global institutions, by audiences, and within the art market.

For additional information about the presentation and availability, please contact the gallery at [info@venusovermanhattan.com](mailto:info@venusovermanhattan.com)

### VENUS OVER MANHATTAN

39 Great Jones Street  
New York, NY 10012  
55 Great Jones Street  
New York, NY 10012

### PRESS CONTACT

Dan Duray  
+1 (203) 520-0619  
[dan@nothingobstacle.com](mailto:dan@nothingobstacle.com)

### IMAGE CREDITS

Roy Lichtenstein, *Paintings: Picasso Head*, 1984  
Richard Mayhew, *Sacred Passage*, 2004  
Keiichi Tanaami, *Pleasure Machine*, 2017  
Brad Kahlhamer, *Rapid City Chants/Super Cascade*, 2024  
Helen Frankenthaler, *Flume*, 1977.  
Images of all works: courtesy Venus Over Manhattan,  
New York.